

Debbie Friedman School of Sacred Music
 Hebrew Union College - Jewish Institute of Religion
 Sample Musicianship Entrance Exam

I. Key Signatures

Write in the indicated key signatures.

Identify the key signatures.



B Major

Bb Minor

Key of _____ Major

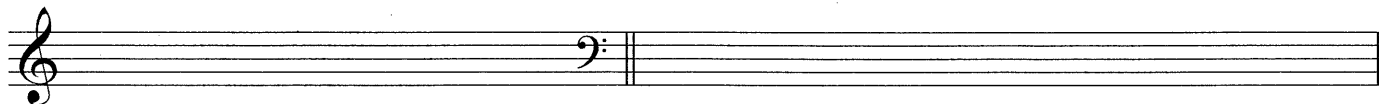
Key of _____ Major

Key of _____ Minor

Key of _____ Minor

II. Scales

Write in the indicated scales (please note the clefs).



F# Major

B Melodic Minor (ascending and descending)

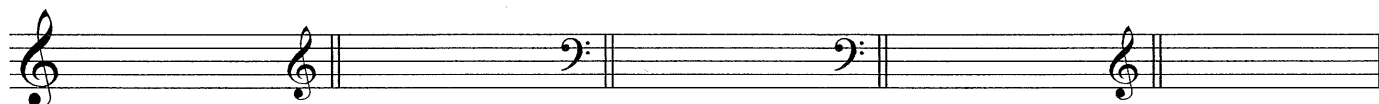


G Natural Minor

Eb Major

III. Harmonic Structures

Write in the indicated chords.



B Major

G# diminished 7th

F dominant 7th

Eb minor 7th

C# minor

IV. Chord Identification

Each chord will be played twice. In the spaces below, write in the type of chord (e.g., maj, min, aug, dim, etc.).

1. _____ 2. _____ 3. _____ 4. _____ 5. _____

V. Interval Identification

Each interval will be played twice. In the spaces below, write in the type of interval (e.g., maj 7th, perfect 4th, etc.).

1. _____ 2. _____ 3. _____ 4. _____ 5. _____

VI. Melodic Dictation (two melodies)

Each melody will be played four times. Only the clef and initial pitch will be given in advance. Small notes below indicate sample melodies.

A)

Two musical staves for melody A. The first staff shows a sample melody in G major, 4/4 time, starting on G4. The second staff shows a sample melody in G major, 4/4 time, starting on G4.

B)

A musical staff for melody B in D major, 3/4 time, starting on D4.

VII. Harmonic Analysis

Using Roman numerals, indicate the harmonic function of the chords in the score below.

Allegro

Musical score for the first system of "Yim-loch A-do-nai l'-o-lam, E-lo ha - yich Tsi- yon, l'-dor va -". The score is in G major, 4/4 time, and consists of two staves (treble and bass clef). The lyrics are: Yim-loch A-do-nai l'-o-lam, E-lo ha - yich Tsi- yon, l'-dor va -.

Musical score for the second system of "dor, ha - l' - lu - - yah; l' - dor va -". The score is in G major, 4/4 time, and consists of two staves (treble and bass clef). The lyrics are: dor, ha - l' - lu - - yah; l' - dor va -.

Musical score for the third system of "dor, ha - l' - lu - - yah; ha - l' - lu - yah.". The score is in G major, 4/4 time, and consists of two staves (treble and bass clef). The lyrics are: dor, ha - l' - lu - - yah; ha - l' - lu - yah.